

Bridge of Hope Prevents and Ends Homelessness

A unique three-way partnership between homeless single mothers, trained groups of Neighboring Volunteers, and professional case managers results in Bridge of Hope's success rate. Women graduate from Bridge of Hope having attained permanent rental housing, financial stability through employment, and a support network from a Christian faith community.

Success in the past years has built momentum for 2018-2019:

- We will add **3+** new Bridge of Hope locations in fiscal year 2018-2019 (by March 31, 2019)—to end homelessness for families in new communities. We will connect with **1,000+** Christian faith-based agencies and churches as we attend four national conferences.
- We will train, resource, and support our **19** locations in **13** states to end homelessness for single mothers and children today and in the years to come.
- We are also celebrating the successes of families served in Bridge of Hope in 2017-18, including 84% of families exiting Bridge of Hope with safe and stable housing and 87% of families exiting Bridge of Hope with employment.
- After 18-months of development, we have begun implementing a brand new training curriculum for Neighboring Volunteers to better equip them in their role of neighboring with families facing homelessness.
- We are inviting all to engage with us in this work as we complete a three-year, \$1 million Strangers to Neighbors Campaign, to fund all the program innovation work and elevate our programming and serve more families in the years ahead.

Faithful Generous Donors are at the Core of Bridge of Hope

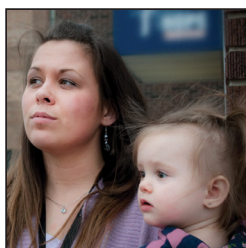
ANNUAL LEADERS OF HOPE GIVING



Success for homeless single mothers is undergirded by Leaders of Hope donors, who year after year generously support Bridge of Hope National. Your generous undesignated gift is especially helpful. Leaders of Hope donors may also direct their support to Bridge of Hope's investment in people or resources:

BRIDGE OF HOPE PEOPLE

Bridge of Hope's investment in people supports our highly dedicated and qualified staff members including Social Workers, Outreach Coordinators, and Development Officers. It also provides the tools used by staff to engage Neighboring Volunteers, congregations, and other organizations.



BRIDGE OF HOPE RESOURCES

Bridge of Hope's investment in resources and tools ensures we are there each and every day – and growing. Our investments change as needs change but include things such as technology, keynote speakers and trainers, facilities, and seed money to support start-ups and expansion.



CHURCHES RESPOND. HOMELESSNESS ENDS. HOPE BEGINS.

Join us today.

Yes, Bridge of Hope National can count on me/us with a Leader of Hope gift as indicated:

My Annual Support: *An annual gift of \$1,000+ will make you a leader in generosity as you partner in our mission - and a member of our Leaders of Hope Society.*

☐ \$1,000 ☐ \$2,500 ☐ \$5,000 ☐ \$10,000 ☐ \$25,000 ☐ Other \$ _____

☐ \$500 - Those age 30 or younger join the Leaders of Hope Society with a gift of \$500

☐ \$300 - Alumnae of the Bridge of Hope program join the Leaders of Hope Society with a gift of \$300

My Gift Preferences:

My/our name(s) as I would like it to appear in writing _____

☐ This gift is anonymous

☐ My gift will come from my donor advised fund.

☐ Check enclosed- payable to Bridge of Hope and mailed to address above.

☐ Charge my credit card

Type of Card _____ Card Number _____ Expiration ____/____

Name as it appears on card _____

My Event Support: *Event support is also a way to be a Leader of Hope.*

Gala Luncheon - May 10, 2019 at DoubleTree Resort in Lancaster, Pennsylvania. Please include _____ tickets.

☐ Cornerstone Sponsor (\$5,000 & up to 8 tickets)

☐ Advocate Sponsor (\$1,000 & up to 4 tickets)

☐ Pacesetter Sponsor (\$3,000 & up to 8 tickets)

☐ Sustainer Sponsor (\$500 & up to 2 tickets)

☐ Champion Sponsor (\$2,000 & up to 8 tickets)

☐ Table Sponsor (\$395 & 8 tickets)

☐ Ambassador Sponsor (\$1,500 & up to 8 tickets)

☐ Patron Sponsor (\$300 & no tickets)

Golf Classic - July 23, 2019 at Foxchase Golf Club in Stevens, Pennsylvania. We will have _____ golfers.

☐ Ace Sponsor (\$3,000- credit for 4 golfers)

☐ Eagle Sponsor (\$2,000- credit for 4 golfers)

☐ Birdie Sponsor (\$1,000- credit for 2 golfers; up to 2 additional golfers @ \$90 each)

☐ Par Sponsor (\$750- credit for 1 golfer; up to 3 additional golfers @ \$90 each)

☐ Bogey Sponsor (\$500- up to 4 golfers @ \$90 each)

☐ Double Bogey Sponsor (\$250- up to 4 golfers @ \$90 each)

Bridge of Hope Annual Conference - Oct. 2-4, 2019 in Akron, Pennsylvania

☐ Presenting Sponsor (\$5,000)

☐ Joint Session Sponsor (\$1,000)

☐ Lunch Sponsor (\$500)

☐ Keynote Sponsor (\$3,000)

☐ Snack Break Sponsor (\$500)

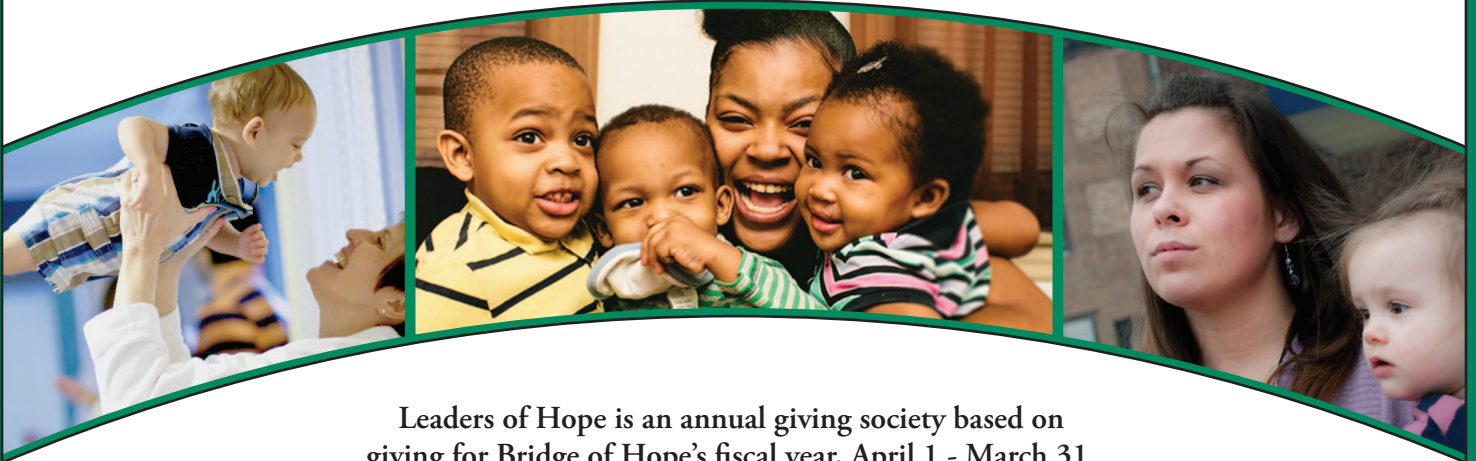
☐ Workshop I Sponsor (\$500)

☐ Award Banquet Sponsor (\$1,500)

☐ Workshop II Sponsor (\$250)

☐ I will be a **TOP SPONSOR** for all 3 Bridge of Hope events (\$13,000 & receive all related benefits)

LEADERS OF HOPE SOCIETY - BENEFITS



Leaders of Hope is an annual giving society based on giving for Bridge of Hope's fiscal year, April 1 - March 31.

● BRONZE

\$1,000 to \$2,499

- Receive newsletters & e-News
- Named and highlighted in our online Annual Report (with option to be anonymous)
- Website listing as a member of the Leaders of Hope Society
- Invitation to the Leaders of Hope Society annual event with the Executive Director and Board Chair
- Receive Bronze-colored Leader of Hope pin in the first year you enter the society

● SILVER

\$2,500 to \$4,999

- All benefits of the Bronze Level plus:
- Link from Bridge of Hope location's website to your business/foundation website
- Receive a new branded item annually to help you to be an ambassador for our mission
- Receive Silver-colored Leader of Hope pin in the first year you enter this giving level

● GOLD

\$5,000 to \$9,999

- All benefits of Silver Level plus:
- Opportunity to receive a printed version of the annual report with a visit from staff
- Invitation to Bridge of Hope anniversary and notable events
- Receive Gold-colored Leader of Hope pin in the first year you enter this giving level

● PLATINUM

\$10,000 to \$24,999

- All benefits of Gold Level plus:
- Invitation to Bridge of Hope's signature annual event(s) with special opportunities
- Receive Platinum-colored Leader of Hope pin in the first year you enter this giving level

● FOUNDERS CIRCLE

\$25,000+

- All benefits of Platinum Level plus:
- Invitation to meet and hear from a woman and/or children served by Bridge of Hope
- Receive Founders Circle Leader of Hope pin in the first year you enter this giving level