

## *Bridge of Hope Prevents and Ends Homelessness*

A unique three-way partnership between homeless single mothers, trained groups of Neighboring Volunteers, and professional case managers results in Bridge of Hope's success rate. Women graduate from Bridge of Hope having attained permanent rental housing, financial stability through employment, and a support network from a church in their community.

### *Success in the past years has built momentum for 2017-2018:*

- We will add **3+** new Bridge of Hope locations in fiscal year 2017-2018 (by March 31, 2018) – to end homelessness for families in new communities. We will connect with **1,000+** Christian faith-based agencies and churches as we attend three national conferences.
- We will train, resource, and support our **19** locations in **11** states and Canada to end homelessness for single mothers and children in 2016 – and for years to come.
- We are also celebrating the successes of families served in Bridge of Hope in 2016-17, including 91% of families exiting Bridge of Hope with safe and stable housing and 95% of families exiting Bridge of Hope with employment.
- We are doing strategic network-wide elevating programming, changing our language and programming to make it more relevant for today's world, including a change from “mentoring” to “neighboring” and increased programming supports for homeless children.
- In 2017, Carmela J. DeCandia, Psy.D., a national expert on homeless services and co-author of the Services Matter report will be helping Bridge of Hope develop new assessment resources for Bridge of Hope staff to use specifically in working with children who are homeless. Additionally, Dr. DeCandia will speak at our 2017 national conference on Assessing Families Experiencing Homelessness and Building Resilience in Children & Families who have Experienced Adversity.

### *Faithful Generous Donors are at the Core of Bridge of Hope*

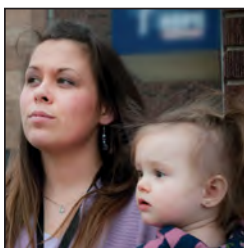
## **ANNUAL LEADERS OF HOPE GIVING**



Success for homeless single mothers is undergirded by Leaders of Hope donors, who year after year generously support Bridge of Hope National. Your generous undesignated gift is especially helpful. Leaders of Hope donors may also direct their support to Bridge of Hope's investment in people or resources:

### **BRIDGE OF HOPE PEOPLE**

Bridge of Hope's investment in people supports our highly dedicated and qualified staff members including Social Workers, Outreach Coordinators, and Development Officers. It also provides the tools used by staff to engage Neighboring Volunteers, congregations, and other organizations.



### **BRIDGE OF HOPE RESOURCES**

Bridge of Hope's investment in resources and tools ensures we are there each and every day – and growing. Our investments change as needs change but include things such as technology, keynote speakers and trainers, facilities, and seed money to support start-ups and expansion.

*Join us today.* Yes, Bridge of Hope National can count on me/us with a Leaders of Hope gift as indicated:

\$1,000     \$2,500     \$5,000     \$10,000     \$25,000     Other \$\_\_\_\_\_

\$500 - Those age 30 or younger join the Leaders of Hope Society with a gift of \$500

\$300 - Alumnae of the Bridge of Hope program join the Leaders of Hope Society with a gift of \$300

payment enclosed     please charge my credit card:

Type of Card\_\_\_\_\_ Card Number\_\_\_\_\_ expiration\_\_\_/\_\_\_

Name as it appears on card: \_\_\_\_\_

*Please use my/our gift as follows:*

**UNDESIGNATED** \$\_\_\_\_\_     **BRIDGE FOR TOMORROW ENDOWMENT** \$\_\_\_\_\_

**BRIDGE OF HOPE PEOPLE** \$\_\_\_\_\_     **BRIDGE OF HOPE RESOURCES** \$\_\_\_\_\_

This gift is anonymous

Please send me information about **MONTHLY GIVING** to Bridge of Hope National

My gift includes **EVENT SPONSORSHIPS** indicated below

*Yes, I would like to Sponsor the Event(s) checked below:*

**GALA LUNCHEON** - May 11, 2018 at DoubleTree Resort in Lancaster, Pennsylvania

Cornerstone Sponsor (\$5,000 & up to 8 tickets)     Advocate Sponsor (\$1,000 & up to 4 tickets)

Pacesetter Sponsor (\$3,000 & up to 8 tickets)     Sustainer Sponsor (\$500 & up to 2 tickets)

Champion Sponsor (\$2,000 & up to 8 tickets)     Table Sponsor (\$350 & 8 tickets)

Ambassador Sponsor (\$1,500 & up to 8 tickets)     Patron Sponsor (\$300 & no tickets)

**GOLF CLASSIC** - July 24, 2018 at Foxchase Golf Club in Stevens, Pennsylvania

Ace Sponsor (\$3,000 & 4 golfers)     Par Sponsor (\$500)

Eagle Sponsor (\$2,000 & 4 golfers)     Bogey Sponsor (\$250)

Birdie Sponsor (\$1,000 & 2 golfers)

**BRIDGE OF HOPE ANNUAL CONFERENCE** - Oct. 5-7, 2017 in Akron, Pennsylvania

Presenting Sponsor (\$5,000)     Closing Session Sponsor (\$750)

Keynote Sponsor (\$3,000)     Snack Break Sponsor (\$500)

Opening Session Sponsor (\$1,500)     Saturday Lunch Sponsor (\$300)

Joint Session Sponsor (\$1,000)     Workshop Sponsor (\$250)

I WILL BE A **TOP SPONSOR** FOR ALL 3 **BRIDGE OF HOPE EVENTS** (\$12,000 & receive all related benefits)

### *Legacy of Hope Society*

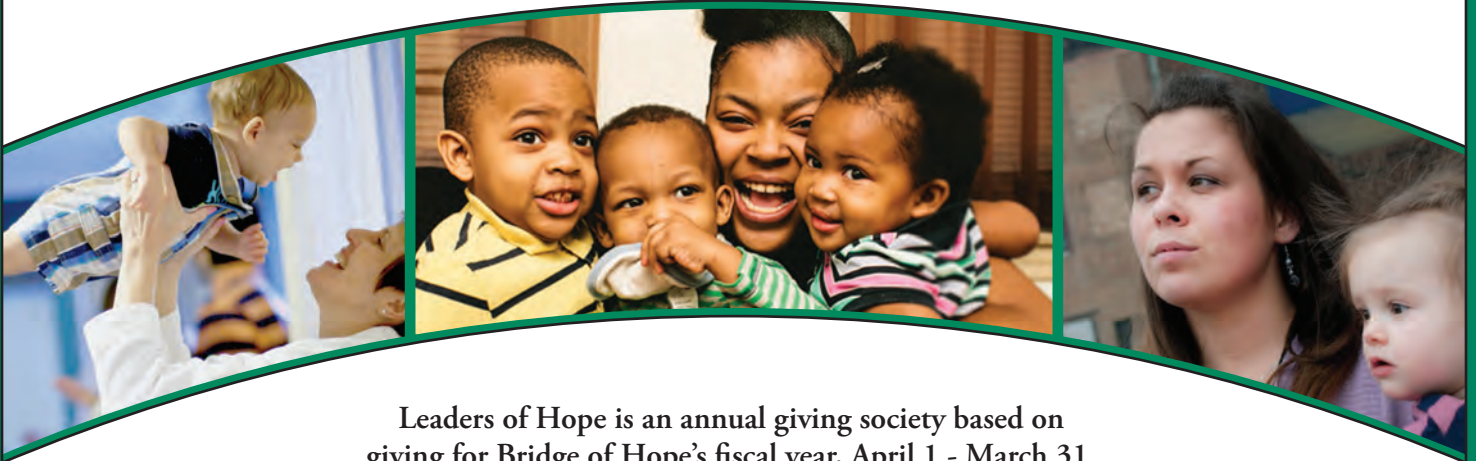
Please contact me to discuss **PLANNED GIVING** to Bridge of Hope National

Please include me in the **LEGACY OF HOPE SOCIETY**, as I have included Bridge of Hope National in my:

Will     Charitable Trust     Retirement     Life Insurance     Other\_\_\_\_\_

Your Name(s) \_\_\_\_\_ Date \_\_\_\_\_

## LEADERS OF HOPE SOCIETY - BENEFITS



Leaders of Hope is an annual giving society based on giving for Bridge of Hope's fiscal year, April 1 - March 31.

### ● BRONZE

**\$1,000 to \$2,499**

- Receive newsletters & e-News
- Named and highlighted in our online Annual Report (with option to be anonymous)
- Website listing as a member of the Leaders of Hope Society
- Invitation to the Leaders of Hope Society annual event with the Executive Director and Board Chair
- Receive Bronze-colored Leader of Hope pin in the first year you enter the society

### ● SILVER

**\$2,500 to \$4,999**

- All benefits of the Bronze Level plus:
- Link from Bridge of Hope location's website to your business/foundation website
- Receive a new branded item annually to help you to be an ambassador for our mission
- Receive Silver-colored Leader of Hope pin in the first year you enter this giving level

### ● GOLD

**\$5,000 to \$9,999**

- All benefits of Silver Level plus:
- Opportunity to receive a printed version of the annual report with a visit from staff
- Invitation to Bridge of Hope anniversary and notable events
- Receive Gold-colored Leader of Hope pin in the first year you enter this giving level

### ● PLATINUM

**\$10,000 to \$24,999**

- All benefits of Gold Level plus:
- Invitation to Bridge of Hope's signature annual event(s) with special opportunities
- Receive Platinum-colored Leader of Hope pin in the first year you enter this giving level

### ● FOUNDERS CIRCLE

**\$25,000+**

- All benefits of Platinum Level plus:
- Invitation to meet and hear from a woman and/or children served by Bridge of Hope
- Receive Founders Circle Leader of Hope pin in the first year you enter this giving level