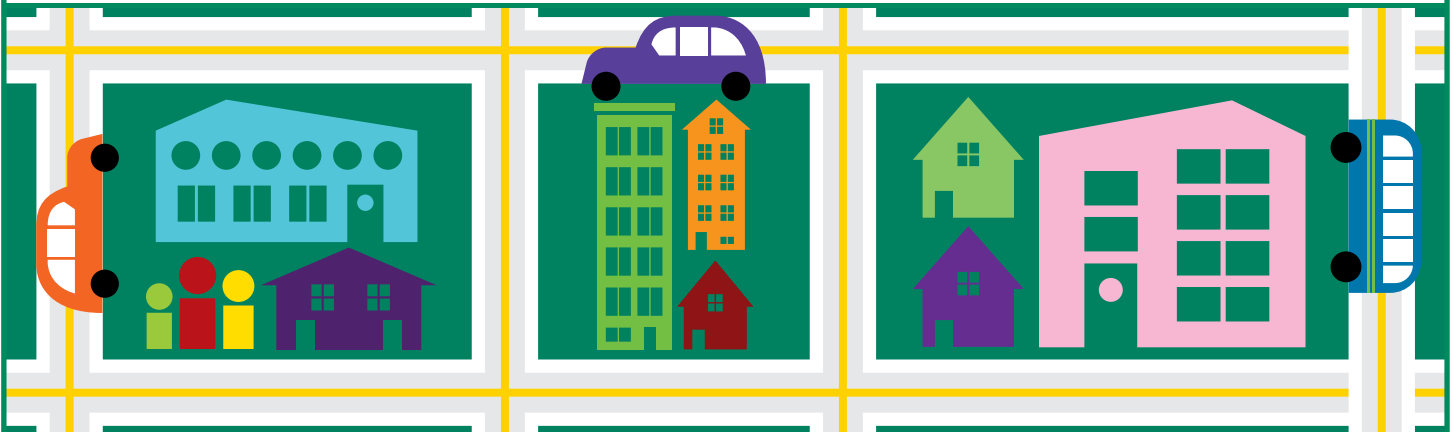




# Strangers to Neighbors: Opening Doors



*2017 Bridge of Hope Conference*  
*The Welcoming Place - Akron, Pennsylvania*  
THURS - SAT, OCTOBER 5 - 7

*This is the year you will want to attend! Don't miss this opportunity to engage with peers, learn how to implement new standards and benchmarks, and receive crucial information for your location.*

## KEYNOTE SPEAKERS

**Dr. Carmela DeCandia**

Joint Sessions 1 & 2  
Thursday, Oct. 5



**Carmela J. DeCandia, PsyD**, is coauthor of the Services Matter report published in November 2015 that provided impetus and direction for our innovation work over the last 18 months. Carmela is a licensed psychologist who has dedicated her career to advancing best practices and policies to support vulnerable children and families, and to improve the systems which serve them. For more than 25 years, she has worked with children and families struggling against a variety of life adversities, has led The National Center on Family Homelessness, and helped launch The Bassuk Center on Homeless and Vulnerable Children and Youth. Dr. DeCandia is the founder and owner of Artemis Associates, LLC where she provides training and consultation to organizations to build trauma-informed and family centered services.

**Margo Starbuck**

Joint Sessions 3 & 4  
Friday, Oct. 6



**Margot Starbuck**, a graduate of Princeton Seminary and Westmont College, is the author of seven books, including *Small Things With Great Love: Adventures in Loving Your Neighbor*. She is fired up about Jesus-style neighboring and believes it is what we've been made to do. She lives in Durham, North Carolina, with her three fabulous teenagers, in North Street Neighborhood, a neighborhood built around people with disabilities. (It's pretty much a dreamy slice of heaven on earth.) Margot enjoys connecting with audiences on campuses and at conferences, retreats, and festivals. Learn more at [www.MargotStarbuck.com](http://www.MargotStarbuck.com).

**Edith Yoder**

Joint Session 5  
Saturday, Oct. 7



**Edith Yoder, EdM**, is the Executive Director of Bridge of Hope National. She authored the *Mentor's Resource Guide* and developed many Bridge of Hope manuals on nonprofit management, fundraising, and board issues. Edith holds a master's degree in Adult and Organizational Development from Temple University and a bachelor's degree in Accounting from Eastern Mennonite University. After 25 years with Bridge of Hope, Edith is more passionate than ever about building neighborhoods of support for families facing homelessness.

**Ben Cattell Noll**

Joint Session 6  
Saturday, Oct. 7



**Ben Cattell Noll** is the Assistant Director of the Veterans Services division at Friendship Place, a homeless service organization in Washington, D.C. He supervises a team focused on outreach, housing, employment, and legal/benefit needs of people experiencing homelessness. He also provides support for the rapid rehousing program and leads trainings in best practices in ending homelessness including workshop trainings with the National Alliance to End Homelessness. Ben is a member of the Bridge of Hope National board of directors.

## CONFERENCE SCHEDULE

### Thursday, October 5, 2017

11:00 AM Registration Opens  
2:00 - 2:30 PM Welcome & Worship  
2:30 - 5:00 PM **Joint Session 1: Dr. Carmela DeCandia - Assessing Families Experiencing Homelessness**  
5:15 PM Dinner  
6:30 - 8:00 PM **Joint Session 2: Dr. Carmela DeCandia - Building Resilience in Children & Families who have Experienced Adversity**  
8:00 PM Coffee Bar  
8:15 PM Book Club - *Hillbilly Elegy* by J.D. Vance (Sudan Room)

### Friday, October 6, 2017

7:00 AM Morning Walk/Run (meet outside Dining Hall)  
7:30 AM Breakfast for overnight registrants  
8:15 - 8:30 AM Music (to prepare our hearts for worship)  
8:30 - 9:00 AM Worship  
9:00 - 9:45 AM **Joint Session 3: Margot Starbuck - Adventures in Loving Your Neighbor**  
10:15 - 11:45 AM Workshop #1  
Noon Lunch  
1:15 - 2:45 PM Workshop #2  
3:15 - 4:00 PM **Joint Session 4: Margot Starbuck - Social Capital: Utilizing Your Networks for Good**  
4:15 - 5:15 PM Workshop #3  
5:30 - 8:00 PM Neighborhood Picnic and Block Party

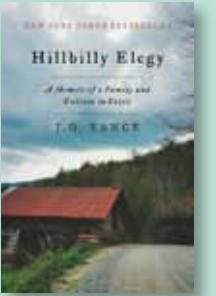
### Saturday, October 7, 2017

7:00 AM Morning Walk/Run (meet outside Dining Hall)  
7:30 AM Breakfast for overnight registrants  
8:15 - 8:30 AM Music (to prepare our hearts for worship)  
8:30 - 9:00 AM Worship  
9:00 - 9:30 AM **Joint Session 4: Edith Yoder - Neighboring as the Bridge of Hope Distinctive**  
9:45 - 11:00 AM Workshop #4  
11:15 AM - 12:30 PM Workshop #5  
12:30 - 12:45 PM Lunch Buffet (Upper Level - take to Joint Session)  
12:45 - 2:00 PM **Joint Session 5: Ben Cattell Noll - Bridge of Hope's Unique Role on the Housing Continuum in Today's Context**

*Note: Meals will be served in the Dining Hall except Fri. dinner and Sat. lunch. Please arrive near the start of the meal time. All large group activities are in the Upper Level Assembly Room unless otherwise noted.*

### Book Club

**Hillbilly Elegy**  
by J.D. Vance



This book has much to discuss, agree, and disagree with. Read it in advance, and come prepared to share your reflections in light of the cultural humility learnings from last year.

*"Hillbilly Elegy is a passionate and personal analysis of a culture in crisis— white working-class Americans. The decline of this group has been reported on with growing frequency and alarm, but has never before been written about as searingly from the inside. J. D. Vance tells the true story of what a social, regional, and class decline feels like when you were born with it hung around your neck." -Amazon.com*

### Conference Cost

Full conference with lodging: \$175 (\$375 for non-members outside the Bridge of Hope network).  
Early-bird discount by Aug. 1: \$150  
Other registration options available at: [bridgeofhopeinc.org/about-us/annual-conference](http://bridgeofhopeinc.org/about-us/annual-conference).

### REGISTRATION DEADLINE:

**September 5, 2017**

### EARLY-BIRD DISCOUNT: AUG. 1, 2017

Register online: [bridgeofhopeinc.org/about-us/annual-conference](http://bridgeofhopeinc.org/about-us/annual-conference)

The Welcoming Place: 21 South 12th Street, Akron, PA 17501

Direct number to the facility for use only regarding directions: 888-563-4676.  
For other questions, call Bridge of Hope National: 866-670-HOPE.

### PARTICIPATION CHALLENGES:

**Affiliates Board Challenge**  
3+ board members attend at least 2 full days – 100% of your board may attend for free!

**Program Site and OneChurch Site Staff/Volunteer Challenge**  
3+ staff/volunteers attend at least 2 full days – \$50 scholarship discount off the total due.

*(Everyone is encouraged to attend all three days to get the full impact of the conference.)*

*Special thanks to our Keynote Sponsors*

Utility Keystone Trailer Sales, Inc. | Weaver, Reckner & Reinhart Dental Associates

	PROGRAM IMPLEMENTATION	BRIDGE OF HOPE STRATEGIES	ENGAGING CHURCHES IN NEIGHBORING	FUNDRAISING	BOARD GOVERNANCE
<b>FRIDAY, OCT. 6</b> <b>WORKSHOP 1</b> 10:15 - 11:45 AM	Neighboring Volunteer Training Session 1 Prototype <i>Kristi Kubicki</i> Lower Level Assembly Room	Helping Families Address Children's Trauma <i>Dr. DeCandia</i> Upper Level Assembly Room	Engaging Christian Faith Communities as Neighboring Volunteers <i>Wesley Furlong</i> Children's Room	Engaging the Board as Fundraisers <i>Liz Vibber</i> Sudan Room	
<b>WORKSHOP 2</b> 1:15 - 2:45 PM	Neighboring Volunteer Training Session 2 Prototype <i>Kristi Kubicki</i> Lower Level Assembly Room	Neighboring vs. Mentoring - What's the Difference Now? <i>Wendy Hoke Witmer</i> Upper Level Assembly Room	Telling their stories: How to write the story of one woman facing homelessness <i>Margot Starbuck</i> Children's Room		Board Effectiveness: Great Governance <i>Liz Vibber &amp; Cindy Bergvall</i> Sudan Room
<b>WORKSHOP 3</b> 4:15 - 5:15 PM	The Role of the Neighborhood Resource Specialist (previously the FRC) <i>Bekah Bowland</i> Lower Level Assembly Room	The Big Picture of Bridge of Hope's New Outcomes, Benchmarks, and Standards for Board and Staff <i>Wendy Hoke Witmer</i> Upper Level Assembly Room	Understanding Millennials in the Church <i>Tim Doering</i> Children's Room	10 Strategies to Build A Financially Sustainable Nonprofit <i>Cindy Bergvall</i> Sudan Room	
<b>SATURDAY, OCT. 7</b> <b>WORKSHOP 4</b> 9:45 - 11:00 AM	Using Motivational Interviewing in Budgeting Conversations <i>Sarah Kim</i> Lower Level Assembly Room	Program Evaluation using our New Outcomes and Benchmarks <i>Wendy Hoke Witmer</i> Upper Level Assembly Room	New Resources for Church Engagement and Donor Relations <i>Bridge of Hope National staff</i> Children's Room		Risk Taking and Risk Tolerance for Boards: When to take chances and when to pause. <i>Beth Trout and Bill Hartman</i> Sudan Room
<b>WORKSHOP 5</b> 11:15 AM - 12:30 PM	Partnering with Landlords <i>Ben Cattell Noll and Stephanie Resto</i> Lower Level Assembly Room	AFFILIATE COUNCIL MEETING: Core Mission and New Outcomes <i>Wendy Hoke Witmer</i> Upper Level Assembly Room	Creating a church engagement annual plan <i>Christine Baer</i> Children's Room	Fundraising with Individuals: Creating a Pipeline of Support <i>Emmily Longenecker and Beth Trout</i> Sudan Room	

CONNECT WITH US #BridgeOfHopeConference #StrangerstoNeighbors #OpeningDoors



311 National Road, Exton, PA 19341  
866-670-HOPE | bridgeofhopeinc.org