

## *Bridge of Hope Prevents and Ends Homelessness*

A unique three-way partnership between homeless single mothers, trained church-based mentoring groups, and professional case managers results in Bridge of Hope's success rate. Women graduate from Bridge of Hope having attained permanent rental housing, financial stability through employment, and a support network of friends from a church in their community.

### *Success in the past years has built momentum for 2016-2017:*

- We will add **3+** new Bridge of Hope locations in fiscal year 2016-2017 (by March 31, 2017) – to end homelessness for families in new communities. We will connect with **1,000+** Christian faith-based agencies and churches as we attend three national conferences.
- We will train, resource, and support our **22** locations in **13** states and Canada to end homelessness for single mothers and children in 2016 – and for years to come.
- In 2016, we are doing strategic network-wide **Core 4 Innovation** work. We will address the changing cultural realities of a crisis in affordable rental housing and declining church attendance (particularly among millennials). The Core 4 Innovation team will make recommendations to the network about our core mission and **core outcomes**. They will outline the changes we need to implement to **achieve safe and stable families, transformative friendships, and engaged Christian faith communities** - now and in the future.
- One of our 2014-2018 strategic goals and the theme of our 2016 Bridge of Hope conference is **Cultural Humility**. Through our conference and other trainings, book studies, and facilitated conversations, we will seek to develop cultural humility (including institutional accountability) among our network of board members, program staff, and other leaders.

### *Faithful Generous Donors are at the Core of Bridge of Hope*

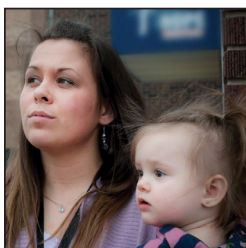
## **ANNUAL LEADERS OF HOPE GIVING**



Success for homeless single mothers is undergirded by Leaders of Hope donors, who year after year generously support Bridge of Hope National. Your generous undesignated gift is especially helpful. Leaders of Hope donors may also direct their support to Bridge of Hope's investment in people or resources:

### **BRIDGE OF HOPE PEOPLE**

Bridge of Hope's investment in people supports our highly dedicated and qualified staff members including Social Workers, Outreach Coordinators, and Development Officers. It also provides the tools used by staff to engage mentors, congregations, and other organizations.

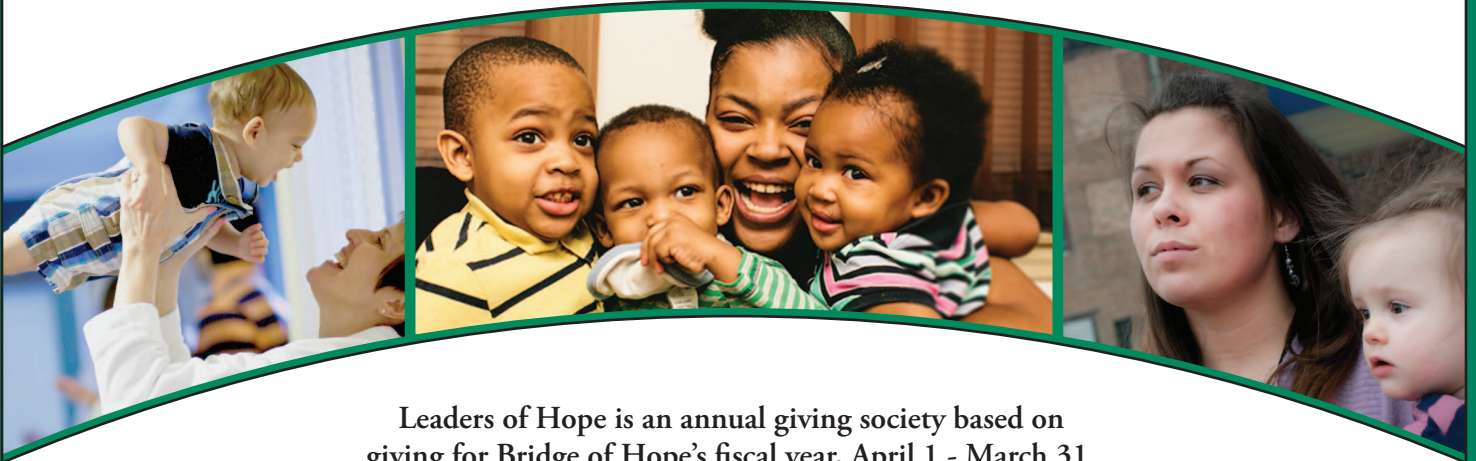


### **BRIDGE OF HOPE RESOURCES**

Bridge of Hope's investment in resources and tools ensures we are there each and every day – and growing. Our investments change as needs change but include things such as technology, keynote speakers and trainers, facilities, and seed money to support start-ups and expansion.



## LEADERS OF HOPE SOCIETY - BENEFITS



Leaders of Hope is an annual giving society based on giving for Bridge of Hope's fiscal year, April 1 - March 31.

### ● BRONZE

**\$1,000 to \$2,499**

- Receive newsletters & e-News
- Named and highlighted in our online Annual Report (with option to be anonymous)
- Website listing as a member of the Leaders of Hope Society
- Invitation to the Leaders of Hope Society annual event with the Executive Director and Board Chair
- Receive Bronze-colored Leader of Hope pin in the first year you enter the society

### ● SILVER

**\$2,500 to \$4,999**

- All benefits of the Bronze Level plus:
- Link from Bridge of Hope location's website to your business/foundation website
- Receive a new branded item annually to help you to be an ambassador for our mission
- Receive Silver-colored Leader of Hope pin in the first year you enter this giving level

### ● GOLD

**\$5,000 to \$9,999**

- All benefits of Silver Level plus:
- Opportunity to receive a printed version of the annual report with a visit from staff
- Invitation to Bridge of Hope anniversary and notable events
- Receive Gold-colored Leader of Hope pin in the first year you enter this giving level

### ● PLATINUM

**\$10,000 to \$24,999**

- All benefits of Gold Level plus:
- Invitation to Bridge of Hope's signature annual event(s) with special opportunities
- Receive Platinum-colored Leader of Hope pin in the first year you enter this giving level

### ● FOUNDERS CIRCLE

**\$25,000+**

- All benefits of Platinum Level plus:
- Invitation to meet and hear from a woman and/or children served by Bridge of Hope
- Receive Founders Circle Leader of Hope pin in the first year you enter this giving level